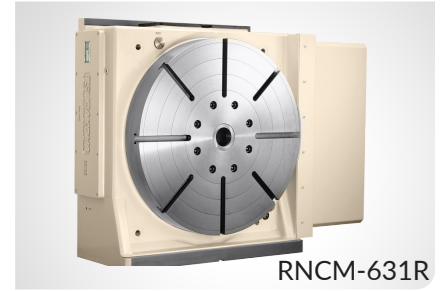


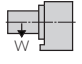

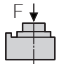
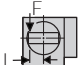
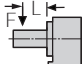
RNCM-251, 301, 401, 501, 631

SPACE SAVING • POWERFUL HYDRAULIC CLAMPING

The RNCM-Series rotary tables utilize a space saving vertical motor mounting configuration. These tables feature powerful hydraulic clamping and can be accessorized with a variety of options.



RNCM-631R

Table Model		RNCM-251	RNCM-301	RNCM-401	RNCM-501	RNCM-631	
Versions available		R, L	R, L	R, L	R, L	R, L	
Table diameter	mm	250	320	400	500	630	
Center height	mm	160	210	255	310	400	
Center bore	Nose Diameter	mm	40H7	40H7	40H7	50H7	60H6
	Thru Diameter	mm	32	40	40	50	60
Table T-slot width		12H7	14H7	14H7	18H7	18H7	
Guide block width		18h7					
Servo motor (Fanuc)*		Alpha 8i	Alpha 12i	Alpha 12i	Alpha 12i	Alpha 12i	
Maximum motor speed	rpm	4,000					
Speed reduction ratio		1/180					
Maximum table speed	rpm	22.2					
Inertia converted into motor shaft	$\times 10^{-3} \text{kg}\cdot\text{m}^2$.30	1.76	2.05	3.09	5.55	
Clamp system**		Hydraulic					
Clamp torque @500psi	Nm (ft. lbs.)	490 (361)	833 (614)	1,764 (1,300)	2,450 (1,806)	4,410 (3,250)	
Indexing accuracy		arc sec. ± 7.5					
Net Weight	kg (lbs.)	75 (165)	200 (440)	300 (660)	450 (990)	800 (1,760)	
Allowable wheel torque	Nm (ft. lbs.)	470 (346)	764 (563)	1,666 (1,228)	2,450 (1,805)	4,116 (3,033)	
Allowable work inertia	$\text{kg}\cdot\text{m}^2$	1.2	3.7	9.7	18.2	39.7	
Allowable work weight	 kg (lbs) [w/ tailstock]	100 (220) [250 (550)]	150 (330) [350 (770)]	200 (440) [500 (1,100)]	250 (550) [600 (1,320)]	400 (880) [1000 (1,760)]	
	 kg (lbs)	250 (550)	350 (770)	500 (1,100)	600 (1,320)	1,000 (2,200)	
Allowable load when table clamped	 N (lbf)	19,600 (4,390)	29,400 (6,585)	39,200 (8,781)	49,000 (10,976)	49,000 (10,976)	
	 Nm (ft. lbs.)	490 (361)	833 (614)	1,764 (1,300)	2,450 (1,806)	4,410 (3,250)	
	 Nm (ft. lbs.)	931 (686)	1,568 (1,156)	2,450 (1,806)	3,430 (2,528)	7,840 (5,778)	

* Other motors & RPM available

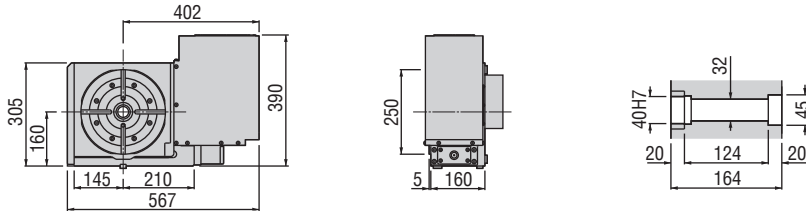
** Booster optional

Specifications subject to change without notice

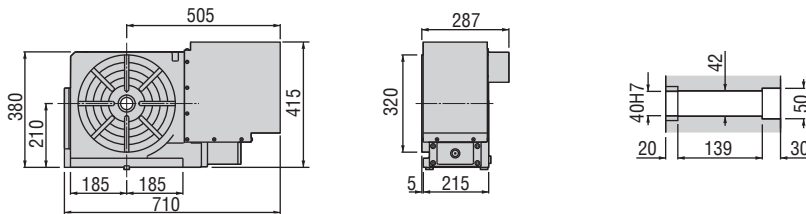
Dimensions

Drawings not to scale • Dimensions = mm

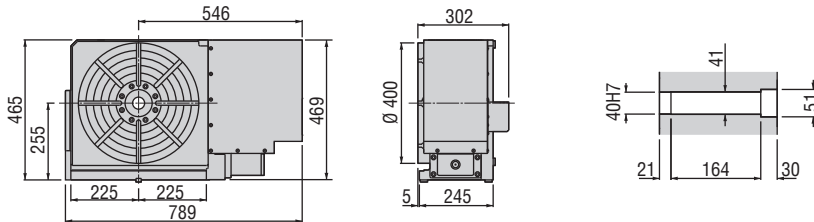
RNCM-251R



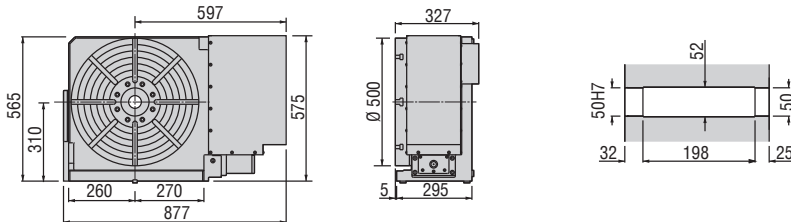
RNCM-301R



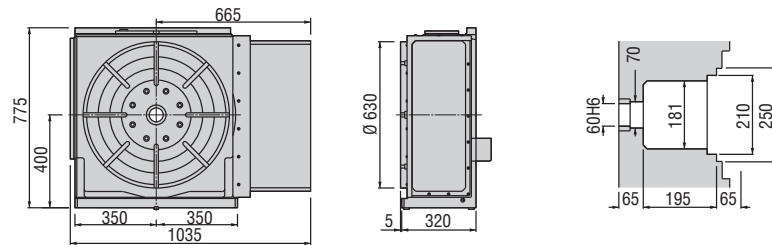
RNCM-401R



RNCM-501R

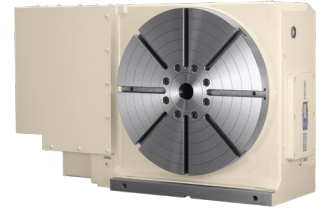


RNCM-631R

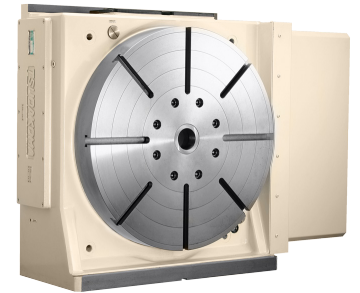


The dimensions above are for tables with a FANUC servo motor. Other motors available (dimensions may increase).

RNCM-401L



RNCM-631R



Options & Accessories

TPC NC Controller	p.62
Chucks	p.74
Tailstock	p.75
Support Spindle	p.77
Face Plate	p.77
Encoder / Scale	p.78
Pull Stud Device	p.79
Rotary Joint	p.79
Booster	p.80
PVC or Steel Cables	p.81

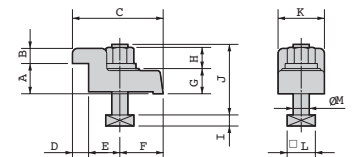
Clamping Block and Bolt

Dimensions = mm

	Type	Q'ty	T-Slot Width	A	B	C	D	E	F	G	H	I	J	K	L	M
RNCM-251	I	4	18	25	12	80	12	33	35	22	21	11	65	40	28	16
RNCM-301	I	4	18	30	15	90	16	31	43	25	21	11	70	46	28	16
RNCM-401	I	4	18	30	15	90	16	31	43	25	21	11	70	46	28	16
RNCM-501	I	4	18	40	20	110	18	42	50	25	21	11	70	46	28	16
RNCM-631	II	4	18	40	18	63	18	15	30	58	21	11	105	60	28	16

Note: When using a machine with a T-slot pitch other than the above, use suitable clamping blocks and bolts that are available on the market, or order custom-made ones from KOMA (opt.)

Type I



Type II

